

Division of Social Sciences

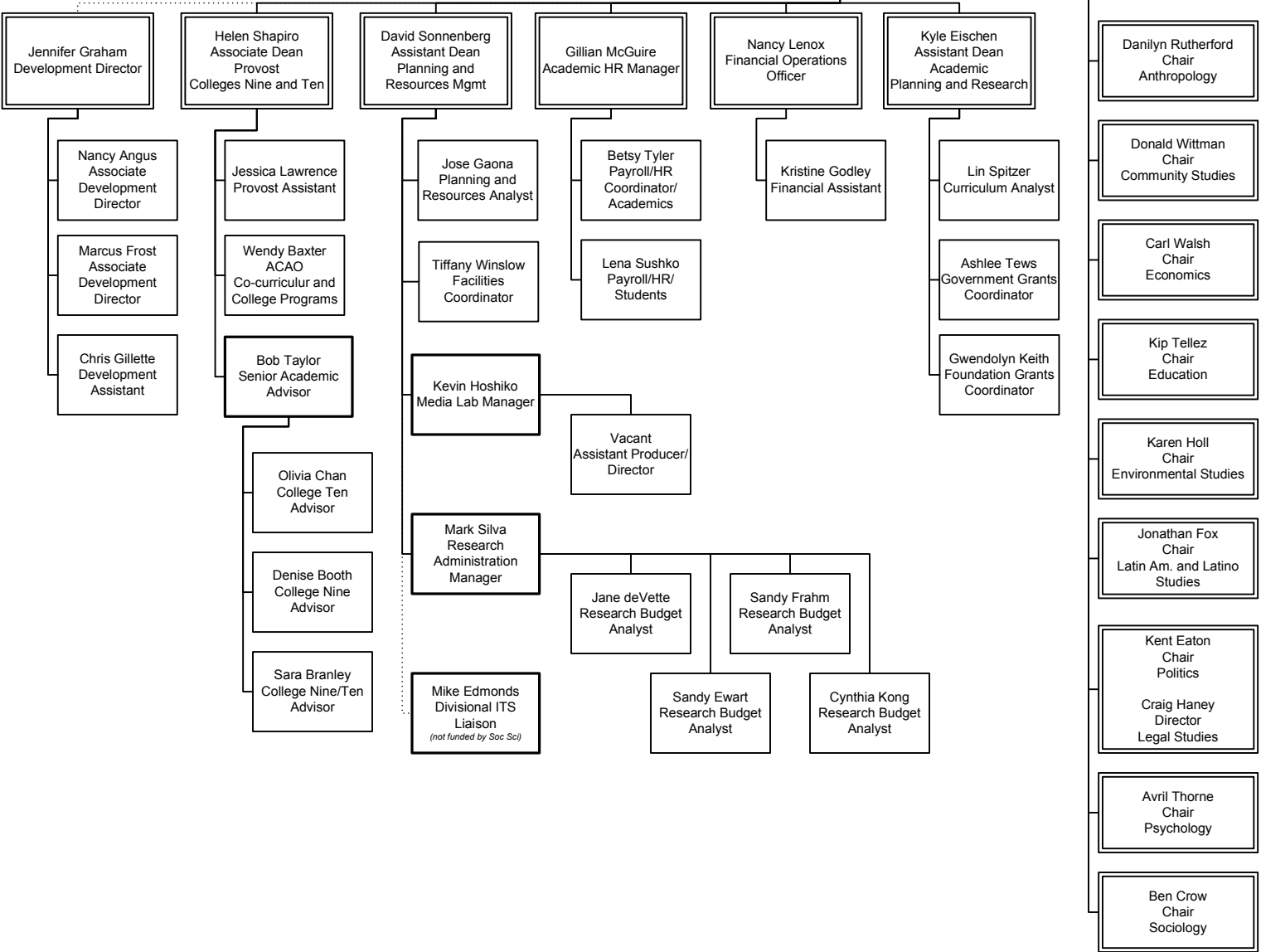
Effective: 01/25/12
Last revised: 01/30/12

Sheldon Kamieniecki
Dean

Andrea Cohen
Executive Assistant
Office Manager

Department Chairs

Research Centers and Initiatives



- | | |
|--|--|
| Center for Agroecology and Sustainable Food Systems (CASFS)
Patricia Allen, Director | Center for Collaborative Research for an Equitable California (CCREC)
Ron Glass, Director |
| Center for Global, International and Regional Studies (CGIRS)
Nancy Chen, Co-director
Paul Lubeck, Co-director | Center for Integrated Spatial Research (CISR)
Barry Nickel, Director
Jeff Bury, Faculty Dir
Chris Wilmers, Faculty Dir |
| Center for Integrated Water Research (CIWR)
Brent Haddad, Director | Center for Labor Studies
Steve McKay, Director |
| Center for Tropical Research in Ecology, Agriculture and Development (CentTREAD)
Greg Gilbert, Co-director
Karen Holl, Co-director | Chicano/Latino Research Center (CLRC)
Gabriela Arredondo, Director |
| Educational Research in the Interest of Under-served Students (ERIUS) Center
Rod Ogawa, Director | Institute for Scientist and Engineer Educators (ISEE)
Lisa Hunter, Director |
| Learning and Experimental Economics Projects of Santa Cruz (LEEPS)
Daniel Friedman, Director | Rethinking Capitalism Initiative
Robert Meister, Director |
| Santa Cruz Institute for International Economics (SCIIE)
Joshua Aizenman, Director | South Asia Studies Initiative in the Division of Social Sciences
Nirvikar Singh, Director |
| | Sury Initiative for Global Finance and International Risk Management (SIGFIRM)
Nirvikar Singh, Co-director
Manda Sury, Co-director |