

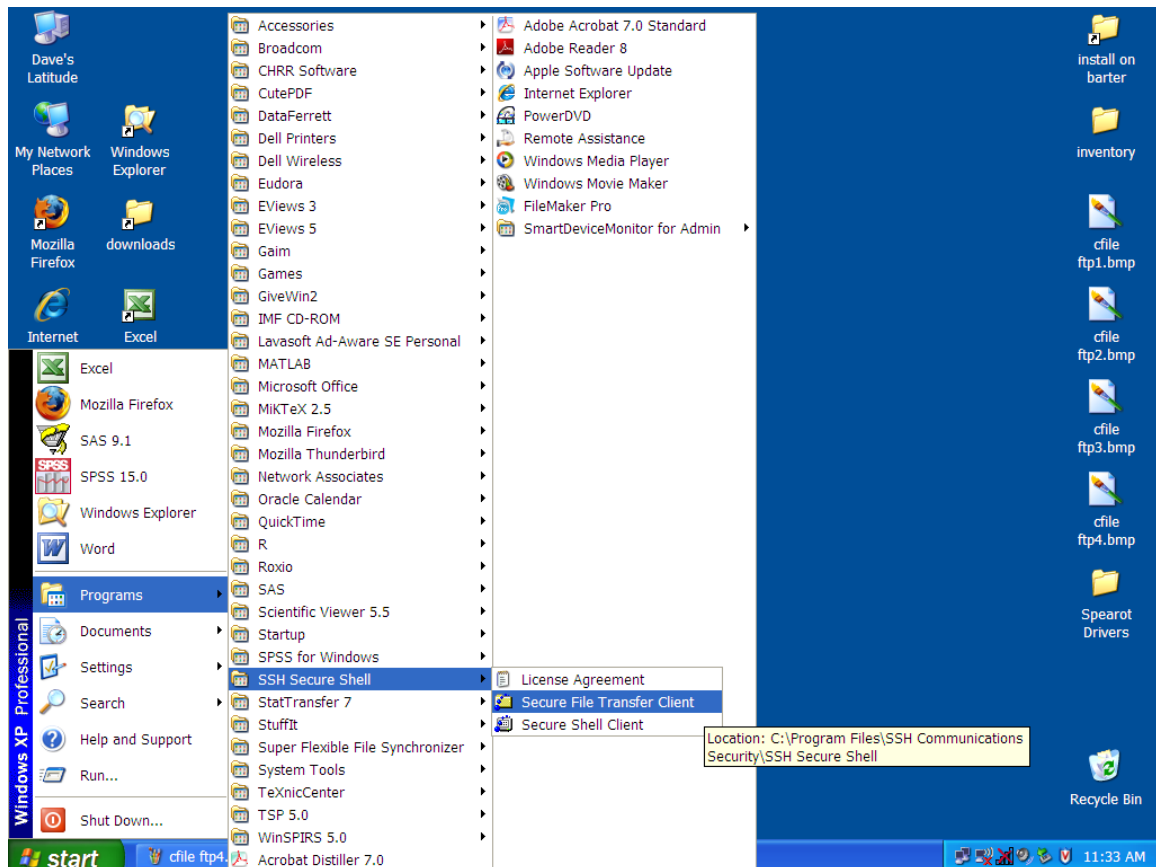
OFF CAMPUS CONNECTION TO CFILE FOR WINDOWS

From off campus, Windows users can **only** use a secure FTP (file transfer) program to connect to cFile. Because of the security vulnerabilities of Windows, the campus firewall does **not** allow 'My Network Places' or 'Mapped Network Drives' connections from outside campus (or from RESNET).

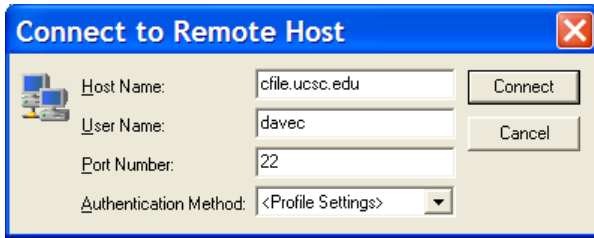
FTP programs allow a user to log into a remote computer on the internet, then transfer files to and from the remote machine to the user's machine (the 'local' machine). A 'secure' FTP program is one that encrypts the user's password before it is sent out onto the internet. FTP programs typically open 2 windows, one showing the local machine and the other the remote machine. Users may then either drag and drop files between the 2 windows, or highlight files and choose a 'download' or 'upload' command. Downloading refers to moving a file from the remote machine to the local machine, and uploading is moving a file from the local machine to the remote machine.

There are many secure FTP programs available. Any should work. One of the common programs in use at UCSC is the 'SSH Secure Shell' program. Most Social Sciences PCs have SSH Secure Shell.

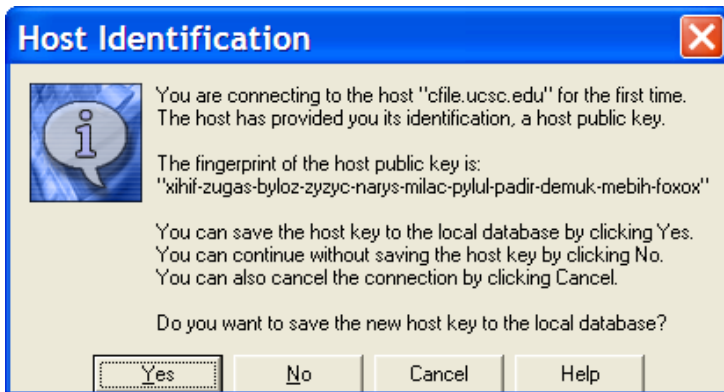
Open SSH Secure Shell by going to Start/Programs/SSH Secure Shell and then choosing 'Secure File Transfer Client'. Alternatively, there may be a shortcut to this program on the Windows desktop.



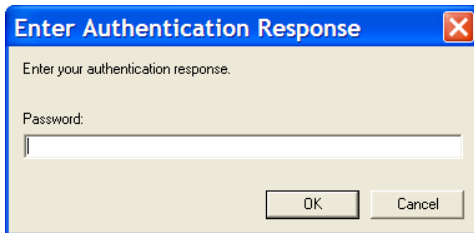
Once the program is open, click on the 'Quick Connect' button, then log into cFile. Use cfile.ucsc.edu as the 'Host Name' and your cFile username. The default entries for Port number and authentication method are correct.



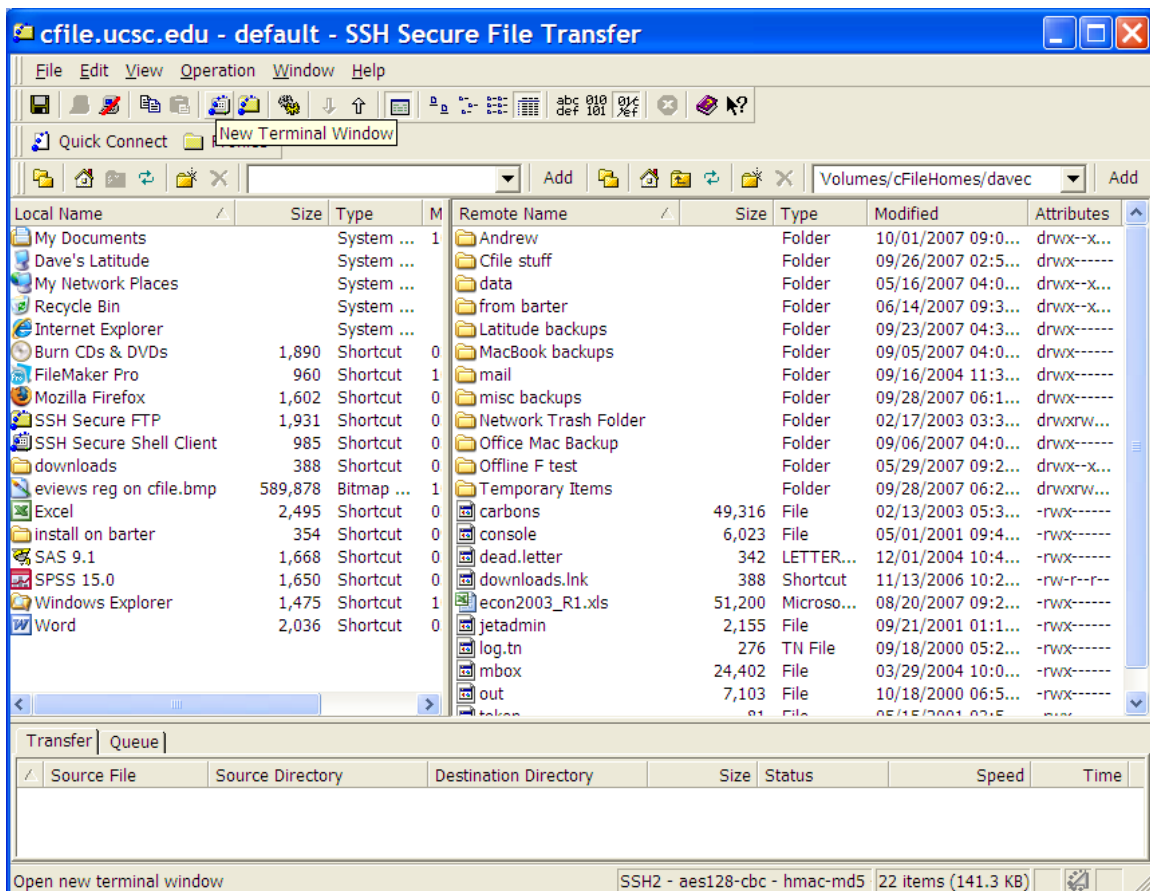
The first time Secure FTP connects to cFile, it will open a 'Host Identification' window and ask if you want to save the 'new host key to the local database'. Choose yes. This box is a mechanism to ensure that the computer you are connecting to is actually cfile.



Type in your cFile password in the 'Authentication Response' box.



Once connected you will be in your personal (home) folder. In Unix-speak your folder is named Volumes/cFileHomes/youraccountname (e.g., Volumes/cFileHomes/davec).



On the left side of this window is a layout of the files and folders on your computer (the local computer). Initially, you will see the desktop of your computer (left side). The right side of the window shows files and folders in your cFile personal folder. You may click on a file on the right

side of the window (which is cFile) and then choose the download command under 'Operation'. This will copy the file from cFile to your desktop. Or navigate to other folders on either cFile or your local machine by clicking on folders or using the up arrow icon on the Secure FTP menu. Once in the proper folder use Operation/Download or Upload to copy files between the two machines. You may also drag a file out of the remote machine and drop it on your desktop.